

# Capability Statement 2025



[admin@trilogyco.com.au](mailto:admin@trilogyco.com.au)

Adelaide, South Australia



# Welcome

## Who is Trilogy Consulting

Specialists in transforming challenges into sustainable solutions. We achieve this by carefully addressing environmental, social, and economic factors to enable our clients to achieve positive project and community outcomes.

## Collaborative & Client-Centric

Trilogy Consulting delivers results through collaboration, integrity, and personalised service. As a boutique firm, we offer agility and leverage our industry network to provide expert solutions with the highest professional standards.

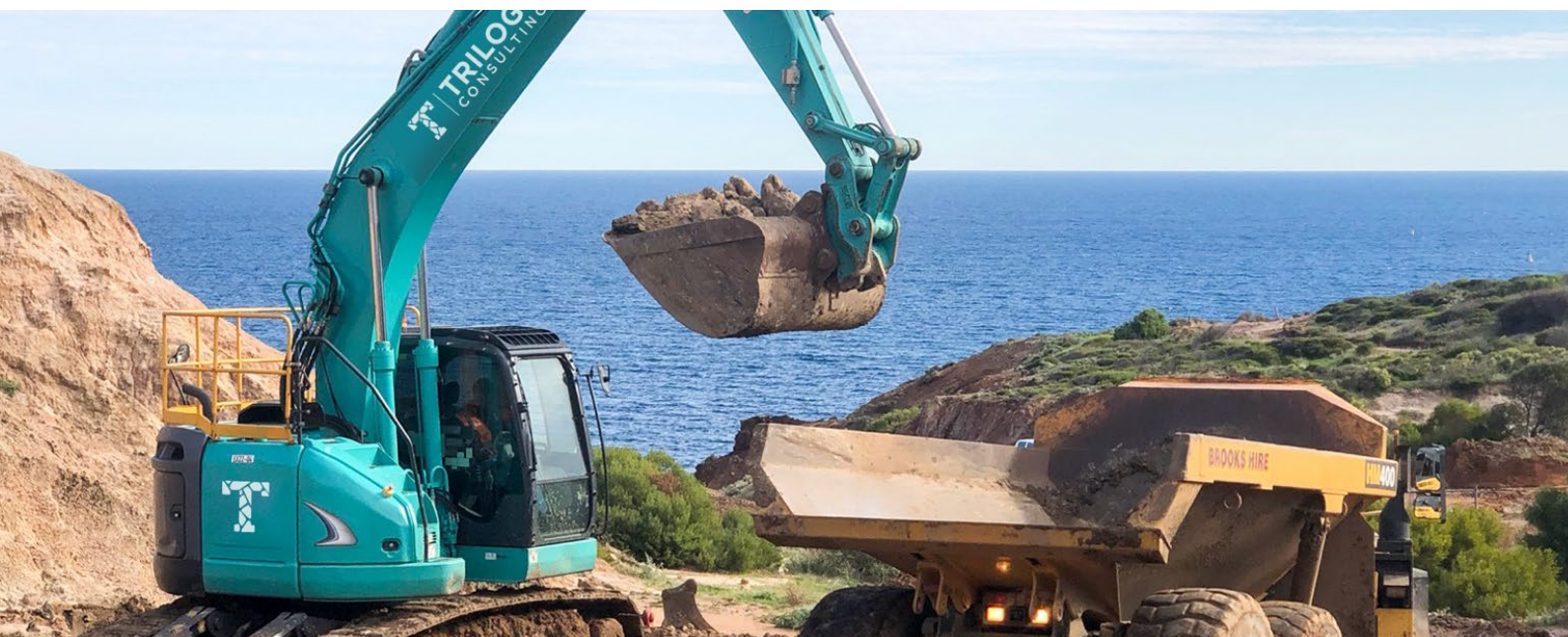
## Practical, Sustainable, & Tailored

We deliver practical, sustainable, and tailored environmental solutions through strong partnerships and focused effort. Our thorough due diligence ensures regulatory compliance, providing clients with the insights needed to confidently manage complex projects.

## Our Core Services

- Property and project due diligence
- Waste management
- Contaminated land advice
- Contaminated land assessment
- Contaminated land remediation.

We are proudly South Australian owned and operated.



# Services Overview

## Contaminated Land Assessment

We provide comprehensive environmental site assessments, identifying and quantifying hazardous substances in soil, groundwater, soil vapour, and surface water. Using advanced techniques and equipment, our services include preliminary and detailed site investigations, risk evaluations, and contamination mapping. This enables informed decisions regarding property safety and viability.

## Contaminated Land Advice

We provide expert contaminated land management guidance, covering regulatory compliance, risk management, and remediation. We collaborate closely with clients to develop tailored strategies for successful outcomes, whether addressing existing issues or planning new projects.

## Contaminated Land Remediation

We restore contaminated sites with tailored remediation strategies, using both traditional and innovative technologies. From soil treatment to bioremediation, we resolve contamination effectively and safely, returning land to usable condition while meeting regulatory standards and client expectations.

## Waste Management

We manage hazardous and non-hazardous waste from contaminated sites, ensuring regulatory compliance and environmentally responsible disposal. Our efficient waste management plans mitigate risks and minimise environmental impact.

## Property & Project Due Diligence

We provide Property and Project Due Diligence, assessing environmental risks for land acquisition and development. Our process includes historical reviews, site inspections, and detailed reports identifying contamination impacts on value and feasibility, protecting your investments.



# Creating Value *beyond the solution*

We are specialists in transforming challenges into sustainable solutions. We achieve this by carefully addressing environmental, social, and economic factors to ensure our clients achieve positive project outcomes.

## Reducing Waste & Saving in Transport

By applying a holistic approach and leveraging our in-depth expertise in site contamination assessment and remediation, Trilogy developed and executed a solution that significantly reduced waste soil on a development project. This resulted in a reduction of over 17,000 tonnes of soil going to landfill, directly supporting the project's sustainability goals. Furthermore, it eliminated the need for 1,700 truck trips (an 80km round trip each, totalling 136,000 km) to transport waste to landfill.

## Approximately \$10 million Saved from Overspending.

Understanding practical risk management, Trilogy posed and oversaw the implementation of a solution to an unforeseen issue that saved approximately \$9,500,000 - \$10,000,000 mitigating significant project overspends. – Referee available upon request.

## Unearthing Opportunity

Learn more about our local **South Australian** team with its **collaborative culture** and **national expertise** and how we can support in **streamlining your project**, no matter the size!

